



BEST
DEVELOPMENT &
CONSERVATION

AWARD 2021

Surveying Excellence in
Development and Conservation



TABLE OF CONTENTS

Message from Guest of Honour	2
Message from the HKIS President	3
Message from the Organising Committee Chairman	4
Message from the Jury Panel Convenor	5
About the Organiser – The Hong Kong Institute of Surveyors	6
About HKIS Best Development and Conservation Award 2021	8
Message from Jury Panel Members	10
List of Awardees	16
Planning Category Awardees	22
Pre-construction Category Awardees	42
Construction Category Awardees	56
Sales & Leasing Category Awardees	70
Post-Occupation Category Awardees	78
Sponsor Advertisements	88
Acknowledgments	98
Jury Panel	99
Organising Committee	100

Message from Guest of Honour



The Hon Mrs Carrie LAM CHENG Yuet-ngor, GBM, GBS
Chief Executive
Hong Kong Special Administrative Region



Message

Development is forward looking. Yet, our goals can only be robust when they are built on our past journeys and achievements. Balancing development and conservation, therefore, is always a challenge to our society's advancement.

I would extend my warmest congratulations to the Hong Kong Institute of Surveyors on your launching of the Best Development and Conservation Award 2021. The Award serves as a timely reminder for all in the industry to accord the necessary economic and technological considerations along the whole life cycle of development, from planning, construction, down to facilities management and even consumer engagement. In particular, I applaud the foresight that all have exhibited by deliberating on the overall long term benefits of the development projects and placing the right emphasis on the socio-economic and environmental aspects of their performance.

On the part of the Government, we are mindful of our role for converging the efforts of all stakeholders from a diversity of interests and expertise. We continue to support a healthy industry structure for facilitating investment and innovation.

With the momentum that has been hard earned from our fight against the COVID-19 pandemic, I have every confidence for an even more united and visionary construction industry in the continuing quest for our better and sustainable future.



(Mrs Carrie Lam)
Chief Executive

Hong Kong Special Administrative Region

Message from the HKIS President



Sr Edwin TANG

President

The Hong Kong Institute of Surveyors

On behalf of The Hong Kong Institute of Surveyors [HKIS], we would like to extend our gratitude to all attending the Presentation Ceremony of the HKIS Best Development and Conversation Award [BDCA]. HKIS is pleased to welcome our distinguished Guest of Honour, The Honourable Mrs Carrie Lam Cheng Yuet-ngor, GBM, GBS, The Chief Executive of Hong Kong Special Administrative Region.

It is an honour for the HKIS to be hosting an award in the name of the institute for the first time, which was an initiative of our Immediate Past President Sr Winnie Shiu in 2020. The theme of our Award is "Surveying Excellence in Development and Conservation." True to its name, the award recognizes the exceptional achievements and excellent construction projects in the aspects of both sustainable development and conservation. Not only will it address the Sustainable Development Goals 2015 set by the United Nations, it will also promote the professional image of surveyors from our six divisions. The award recognises their untiring efforts which have contributed to the development of the city and conservation of places of historical and archaeological interest.

Ultimately, HKIS's goal is to increase public awareness on surveyors' contribution in Hong Kong development, particularly their contribution to whole development cycle of the built environment, from planning stage to post-occupation stage. With the challenges brought on by the pandemic, the importance of achieving sustainable development in Hong Kong has been highlighted. Therefore, our hope is to promote the surveying industry to the younger generation in order to attract fresh perspectives to the industry.

Once again our appreciation goes out to all Jurors who have taken time to assess every nomination and make the uneasy decisions of selecting the best from the best. I would also like to extend our sincere gratitude to our generous sponsors and the project teams participating in the award competition. Here is also a special thank you to our award organizing committee led by Sr Alexander Lam for their meticulous planning and input for BDCA 2021.

To conclude, huge congratulations to all the winners and thank you to those attending the award presentation ceremony.

Message from the Organising Committee Chairman



Sr Alexander LAM

Chairman

Organising Committee

The Hong Kong Institute of Surveyors

Best Development and Conservation Award 2021

Millions of thanks to all attending this pioneer award ceremony. The main theme of this Award is to demonstrate the excellence of six surveying disciplines contributed by in-depth experienced practitioners, inter alia with other experts, irrespective of the project nature or usage, across different phasing of a normal project development cycle in the context of economic, environmental and social sustainability.

We are honoured to have the Honourable Mrs Carrie Lam Cheng Yuet-ngor, GBM, GBS, the Chief Executive of Hong Kong Special Administrative Region to be our Guest of Honour as well as many distinguish guests. We are delighted to receive many remarkably outstanding projects in this competition, all of which have satisfied our main theme.

Due to the pandemic, our award experienced a few hiccups including extension of deadlines, cancellation of site visits, closed-door finalist presentation and so on. Finally, we are excited to hold an award presentation ceremony and gather all winners together to celebrate success of this event.

A special acknowledgement goes to the Jurors and our screening committee members for their precious time to assess all the submissions which is a challenging mission to select the best out of the best. The professional insights from each project team are instrumental to inspire our industry more forward-thinking in developing strategies, in application of new technology and most importantly in adding economic, social, environmental value to projects for long term sustainability objectives.

Tremendous gratitude and appreciation to all of our generous sponsors for making this award possible and also to all our members of the Organising Committee for their time and effort in the past two years to ensure a successful Award event. Furthermore, a special thanks to Sr Winnie Shiu, Immediate Past President of HKIS to initiate BDCA Award.

Last but not least, heartfelt congratulations go to all the award winners as well as merit holders for their ground-breaking contributions.

Message from the Jury Panel Convenor



Sr Prof Bay WONG

Jury Panel Convenor
The Hong Kong Institute of Surveyors
Best Development and Conservation Award 2021

It is a great honour to be appointed as the convenor for the first HKIS Best Development and Conservation Award Jury Panel. I would like to applaud HKIS for successfully organising the BDCA 2021.

Different stages during the land development cycle, which ranges from the initial conceptual planning stage to the post-occupation stage, rely on the expertise of different surveyors. The judging criteria used in this competition is extensive as it is tailor-made according to the surveyors' role, and how it contributes to the development. Through this award, we understand that the concept of maintenance and conservation are inseparable as the maintenance of nature after all is conservation. Today we call it "sustainable development".

A special acknowledgement goes out to the jurors who spent two Saturdays last November, exercising their expertise in order to help with the process of judging. The quality and thoughtful development strategies and designs of all of the submissions and presentations were truly impressive. When it came down to it, the scores between the finalists were amazingly close and it was indeed an arduous task to discern the winners.

Once again, huge congratulations to all the winners. We are incredibly grateful to have the opportunity to meet the project teams physically again and share in the celebration of their achievements.

About the Organiser – The Hong Kong Institute of Surveyors

The Hong Kong Institute of Surveyors ('HKIS' or 'the Institute') was founded in April 1984 and had 85 founder members. The Institute was statutorily incorporated by virtue of the Hong Kong Institute of Surveyors Ordinance in January 1990 [Cap. 1148]. In July 1991, the Surveyors Registration Ordinance [Cap. 417] was passed and a Registration Board was set up to administer the registration of surveyors.

The Hong Kong Institute of Surveyors is the only surveying professional body incorporated by ordinance in Hong Kong. The HKIS work includes setting standards for professional services and performance, establishing codes of ethics, determining requirements for admission as professional surveyors, and encouraging members to upgrade skills through continuing professional development.

HKIS has an important consultative role in government policy making and on issues affecting the profession. We have advised the government on issues such as unauthorised building works, building safety campaign, problems of property management, town planning and development strategies, construction quality and housing problems. We have also issued guidance notes on floor area measurement, real estates evaluation and land boundary survey, etc.

The HKIS membership has now grown to over 10,000. As of 6 October 2021, the number of members reached 10,806, including 7,412 Corporate Members consisting Fellows and Members – distinguished by the initials FHKIS and MHKIS; 69 Associate Members – distinguished by the initials AMHKIS; and 3,325 probationers and student members.

To qualify as a Corporate Member of the Institute, surveyors must possess a recognised academic qualification; complete supervised professional training within strict guidelines for a minimum period of 24 months, followed by an Assessment of Professional Competence [APC].

The title "Surveyor" embraces a number of disciplines involved with land and its development with land and buildings, covering an extremely wide scope. Some surveyors work in private practices and others may work for a landowner, developer, building contractor or government departments and related bodies.

The Institute consists of six divisions and one Young Surveyors Group:

- Building Surveying Division
- General Practice Division
- Land Surveying Division
- Planning and Development Division
- Property and Facility Management Division
- Quantity Surveying Division

A **land surveyor** measures and records the shape and position of the land, defines the boundary and sets out the legal boundaries of the sites. A **general practice surveyor** advises on the best use of the land, assesses the feasibility and viability of the proposed development project as well as the valuation, marketing, sales and leasing and management of completed developments. A **planning and development surveyor** further advises on the possible change of zoning, the likely environmental impacts and makes suggestions on preliminary development contents. A **quantity surveyor** is concerned with the building contractual arrangements and cost control, and will evaluate the likely cost of the development project and advise on the most suitable kind of contract for the project. A **building surveyor** is involved in the project management of building development proposal, holistic maintenance management of building and overall control of private buildings under relevant legislation. A **property and facility management surveyor** provides a comprehensive range of services in real estate management.

The Institute has established and continues to expand its presence in the international scene through participation in various international platforms as well as reciprocity agreements with professional surveying and valuation institutes in the UK, Australia, New Zealand, Singapore, Japan, Canada and Mainland China; and through membership in relevant world bodies and international organisations to maintain its professional edge at international level.

About HKIS Best Development and Conservation Award 2021

CATEGORIES

1

PLANNING

2

PRE-CONSTRUCTION

3

CONSTRUCTION

4

SALES & LEASING

5

POST-OCCUPATION



BEST DEVELOPMENT & CONSERVATION AWARD 2021

With the theme “*Surveying Excellence in Development and Conservation*”, HKIS Best Development and Conservation Award 2021 (HKIS BDCA 2021) is a pioneering award that recognises exceptional achievements and excellence of construction projects related to both development and conservation. This Award not only supports the Sustainable Development Goals 2015 set by the United Nations but also promotes the professional image of surveyors; recognises their efforts contributed to development and conservation; and raises the public awareness of conservation in development projects.

The finalists will be awarded with the following award types:

Award Type	Description
Best Development and Conservation Award[s]	Best Development and Conservation Award will be presented to project[s] with outstanding OVERALL quality that is [are] judged to be the BEST among all the Grand Award Winners.
Grand Awards	There will be a Grand Award Winner[s] for each award category. This is the highest recognition to projects at the category level.
Merits	There will be recognition of merit[s] for each award category.

Assessment Criteria

(I) Planning

Surveyors' Contribution

- [A] Project Inception and Project Planning [30%]
- [B] Land Administration [30%]
- [C] Town Planning Approvals, Statutory Approvals and Engagement with Local Public Bodies [40%]

(II) Pre-construction

Surveyors' Contribution

- [A] Resources and Financial Arrangement [30%]
- [B] Design Development [40%]
- [C] Procurement [30%]

(III) Construction

Surveyors' Contribution

- [A] Innovation and Technology [25%]
- [B] Value and Cost Management [25%]
- [C] Logistical Arrangement [20%]
- [D] Project Management [30%]

(IV) Sales and Leasing

Surveyors' Contribution

- [A] Marketing Concept [20%]
- [B] Sales and/or Leasing Strategies [50%]
- [C] Marketing Management [30%]

(V) Post-occupation

Surveyors' Contribution

- [A] Innovation and Technology [20%]
- [B] Value Enhancement [30%]
- [C] Property/Facility Management [30%]
- [D] Cultural and Environmental Conservation [20%]

Message from Jury Panel Members

Member



Sr Hak CHAN, BBS

Past President of The Hong Kong Institute of Surveyors
Former Deputy Director of Lands [Survey & Mapping] of Lands Department, HKSARG
Founding Board Member of Smart City Consortium

I would like to applaud the Hong Kong Institute of Surveyors for successfully organising the Best Development and Conservation Award (BDCA) 2021. The Award recognises the outstanding achievements and excellent construction ideas in tackling the challenges and fulfilling the expectation in both development and conservation by exploiting the contemporary technology. As one of the jury members, I had much pleasure in witnessing the dedication and professionalism of surveyors in their endeavours as exhibited in their innovative and ambitious submissions.

Finally, my heartiest congratulations go to the award winners and I wish all participants a most rewarding and enjoyable time at the Presentation Ceremony.

Member



Sr Prof K W CHAU

Past President of The Hong Kong Institute of Surveyors
Chair Professor, Department of Real Estate and Construction
The University of Hong Kong



Message from Jury Panel Members

Member



Mrs Sylvia LAM

Former Director of Architectural Services
Architectural Services Department, HKSARG

I congratulate the Hong Kong Institute of Surveyors [HKIS] in successfully bringing about the pioneering Best Development and Conservation Award 2021. The theme of 'Surveying Excellence in Development and Conservation' is extremely meaningful, enhancing the awareness of conservation in development projects, preserving our culture and heritage, contributing to a quality built environment for Hong Kong.

It is my great pleasure and honour to be part of this prestigious Award. As one of the Jurors, I see the superb quality of all the submissions and the dedication given by all participants.

On this occasion, I would like to convey my gratitude to HKIS for the marvelous work they have done and I sincerely wish HKIS continued success in the future.

Member



Mr Raymond LEE
Former Director of Planning
Planning Department, HKSARG

Congratulations to the successful organisation of the Best Development and Conservation Award 2021 of The Hong Kong Institute of Surveyors.

The Award is meritorious in recognising the distinguished contribution of surveyors towards the achievement of Sustainable Development Goals in both development and conservation projects.

I have every confidence that The Hong Kong Institute of Surveyors will continue to contribute to the provision of quality surveying services and professionalism in the industry. I sincerely wish the Institute every success in all future endeavors!

Message from Jury Panel Members

Member



Mr Douglas SO Cheung Tak, BBS, JP
Chairman
Antiquities Advisory Board

My warmest congratulations to all the awardees of the Best Development and Conservation Award (BDCA) 2021!

I am honoured to be one of the Jurors for the BDCA. In the course of assessment, I was deeply impressed by the submissions and team presentations which are all well prepared and delivered, reflecting the professionalism of the team members, the great efforts they have made, the difficulties they encountered and overcame, and the innovative and sustainable ideas they ploughed in throughout the process. I am delighted, in particular, to see the concept of heritage conservation applied in every stage of the process, from formulation of the “conservation-cum-development” strategy, to design and construction. The spirit, professionalism, innovation and creativity the team members demonstrated are what we need to build a better place whilst conserving our valuable heritage.

Lastly, I am much inspired by the spirit, “Surveying Excellence in Development and Conservation”, which speaks fully that, with professional and sensible design and execution, development and conservation can complement each other to make our place unique and charming.

My heartfelt congratulations again to all the awardees on their well-deserved recognition!

Member



Mr YU Tak-cheung, JP
Director of Buildings
Buildings Department, HKSARG

It is a great pleasure for me to extend my heartiest congratulations to the Hong Kong Institute of Surveyors and the award winners on their remarkable achievements. Their professionalism has showcased the finest of surveying excellence. I would like to also express my gratitude for their unwavering support and commitment to promoting sustainable development and conservation. I wish the Institute and our very talented surveyors every success in their continued pursuit of excellence in the years ahead.

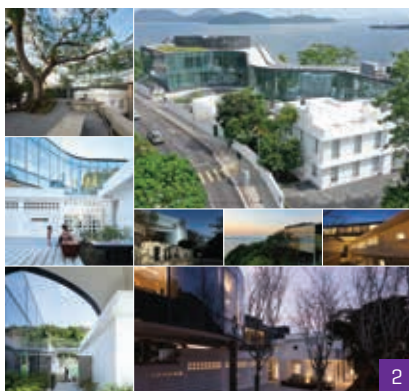
List of Awardees

PLANNING

- 1 The Mills
- 2 The Hong Kong Jockey Club University of Chicago Academic Complex |
The University of Chicago Francis and Rose Yuen Campus
- 3 CLP Argyle Street Head Office Redevelopment [Land and Planning Consultancy
Services]
- 4 One · Artlane
- 5 One HarbourGate
- 6 Sha Po Fairyland – Cognitive Intelligence of Conservation in Residential
Development
- 7 The Avenue
- 8 Victoria Dockside
- 9 West Kowloon Cultural District [Land and Planning Consultancy Services]



1



2

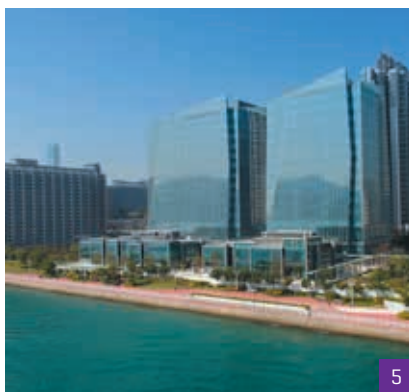


CLP Anglo Street Head Office Redevelopment

3



4



5



沙浦候花園 - 濕地·建家
Sha Po Fairland -
Cognitive Intelligence of
Conservation in Residential Development



6



7



8



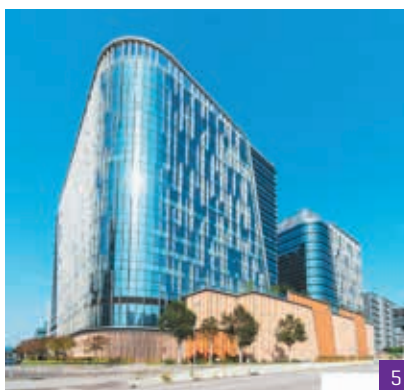
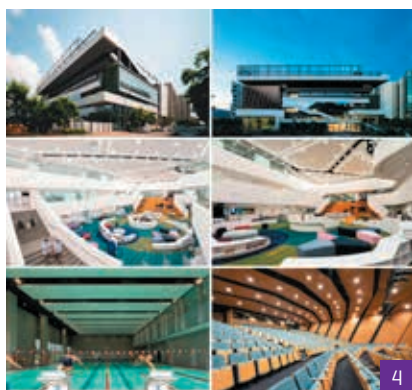
West Kowloon Cultural District

9

List of Awardees

PRE-CONSTRUCTION

- 1 One Taikoo Place
- 2 Fitting-out Works for Kwai Tsing District Health Centre
- 3 MALIBU
- 4 Malvern College Hong Kong
- 5 SPX1
- 6 St Andrew's Church Life Centre



CONSTRUCTION

1 Victoria Dockside

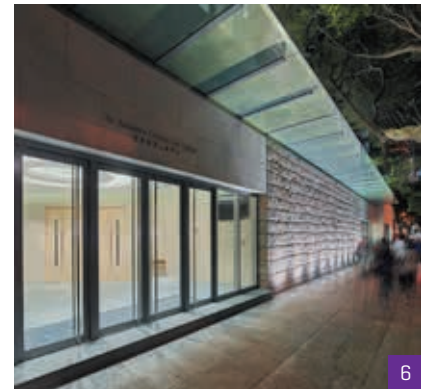
2 Hong Kong Children's Hospital
[HKCH]

3 Kai Tak Cruise Terminal Building

4 Monterey

5 One · Artlane

6 West Kowloon Law Courts Building



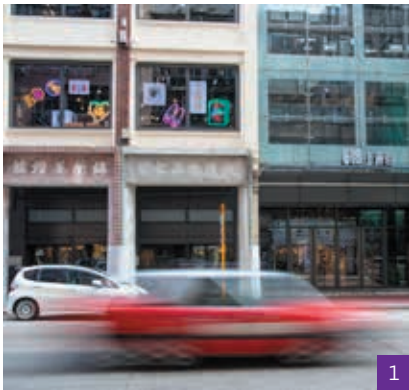
List of Awardees

SALES & LEASING

1 618 Shanghai Street

3 OASIS KAI TAK

2 One · Artlane



POST-OCCUPATION

1 618 Shanghai Street

2 One Bay East

3 Renovation of 1/F, Main Block,
APB Centre, Architectural Services
Department

4 Sha Po Fairyland – the First Managed
Wetland in Residential Estate



PLANNING

BEST DEVELOPMENT AND CONSERVATION AWARD & GRAND AWARD

1 The Mills

GRAND AWARD

2 The Hong Kong Jockey Club University of Chicago Academic Complex | The University of Chicago Francis and Rose Yuen Campus

MERIT

3 CLP Argyle Street Head Office Redevelopment
[Land and Planning Consultancy Services]

4 One · Artlane

5 One HarbourGate

6 Sha Po Fairyland – Cognitive Intelligence of Conservation in Residential Development

7 The Avenue

8 Victoria Dockside

9 West Kowloon Cultural District
[Land and Planning Consultancy Services]

Planning Category Awardees

Best Development and Conservation Award & Grand Award – Planning

| The Mills

Nan Fung Group

Project Contributor Knight Frank

Description

The Mills is a landmark revitalisation project in Chai Wan Kok that celebrates the industrial legacy of Hong Kong. Project owner Nan Fung, a historical pillar of the city’s textile industry, appointed Knight Frank as land consultant for wholesale conversion and heritage conservation of their Textile Mills [6,809 sq m] into “The Mills”, a new fashion and textile landmark. The first private sector-initiated revitalisation project in HK to adaptively reuse old industrial space for sustainable development, The Mills will inspire future generations with its unique historical and cultural spaces, distinct textile themes, innovation and learning experiences for the community.



Planning Category Awardees

Grand Award – Planning

The Hong Kong Jockey Club University of Chicago Academic Complex | The University of Chicago Francis and Rose Yuen Campus

The University of Chicago

Project Contributors

Townland Consultants Limited
Professional Property Services Limited
Revery Architecture Inc. (formerly Bing Thom Architects)
Revival Heritage Consultants Limited
Rider Levett Bucknall Limited
Helen Chan Professional Land Survey Ltd
Engineering Surveys Limited
AIM Group
AEC Limited

Arcadis Consultancy Hong Kong Limited
ARUP
Front Inc.
HLB Lighting Design Inc.
MVA Hong Kong Limited
Paul Y Engineering Group
SMC Asia Limited
Substance Lab
SWA Group
Tyson Foundation Limited
Urbis Limited
Wai Hing Wah & Associates Limited

Description

In keeping with its long-standing tradition of creating architecturally significant building projects, the University of Chicago has developed its new campus at the Ex-Victoria Road Detention Centre site that not only respects the Grade 3 heritage assets of the site, but highlights and showcases them. The conservation vision places emphasis on preserving physical heritage elements as well as the interpretation of the site's multi-layered history, in order to allow the collective memories to be recorded, interpreted, appreciated, respected and shared. The campus integrates iconic architecture with the adaptive use of heritage buildings, all nestled within natural landscapes and topographical features. The campus achieves balance between academic vision and heritage interpretation for all members of the community.



Planning Category Awardees

Merit – Planning

CLP Argyle Street Head Office Redevelopment (Land and Planning Consultancy Services)

CLP Power Hong Kong Limited, Sino Group

Project Contributors Knight Frank
 Masterplan Limited

Description

Knight Frank and Masterplan joined forces to assist CLP in the redevelopment of the former Head Office, of which the Clock Tower Building was constructed in 1940 and enlisted as a Grade 1 Historic building. The preservation-cum-development scheme sought to maximise the development potential by encouraging the Town Planning Board to preserve the CTB in accordance to Government's Heritage Policy. The Consent to Redevelopment application was approved in 2017 with a 50% reduction in land premium. Jointly managed by CLP and Sino Land, the residential project has now been rebranded as "St. George's Mansion".



CLP Argyle Street Head Office Redevelopment

Planning Category Awardees

Merit – Planning

| One · Artlane

Henderson Development Limited, Peterson Group

Project Contributors Project Management [2] Department,
Henderson Development Agency Limited
Knight Frank Petty Limited
Kenneth To & Associates Ltd

Description

With environmental, cultural, and community considerations at the core of its design, One Artlane aimed towards rejuvenating and nurturing a formerly run-down district in Sai Ying Pun and sought to provide a holistic urban fabric design for the community. Inspired by the popular urban art murals in New York, London and Seoul, Henderson Land invited famous artists to create murals under the theme of “Art & Music of SOHO” to beautify, revitalize and transform the old district to the largest art mural village in Hong Kong. To acknowledge its unprecedented contributions to the community, One Artlane is recognized by the Hong Kong Tourism Board as one of the four major new tourist attractions in 2019 and the Grand Awardee of Quality Building Award 2020 [Single Residential Category].



Planning Category Awardees

Merit – Planning

| One HarbourGate

Wheelock Properties Limited

Description

One HarbourGate is set prominently on the Hunghom waterfront, the two 15-storey towers are fronted by two 2-storey retail blocks that creates a sleek and dynamic harbourfront landmark ensemble, which aims to make Victoria Harbour attractive, vibrant, accessible and symbolic of Hong Kong – a harbour for the people and a harbour of life. One HarbourGate demonstrated the overall design go beyond the statutory stipulations and made sufficient considerations on all aspects from acquisition strategy, development plan, project construction to completion with the joint efforts of expertise from general practice surveyors, planning & development surveyors, quantity surveyors, architects and consultants.



Planning Category Awardees

Merit – Planning

Sha Po Fairyland – Cognitive Intelligence of Conservation in Residential Development

Sun Hung Kai Real Estate Agency Limited

Project Contributors aec Limited
 Llewelyn-Davies Hong Kong Limited

Description

Park Yoho, with about 3,100 flats, is a first-of-its-kind wetland conservation cum residential development. ‘Sha Po Fairyland’, the 7-hectare restored wetland, is now home to over 330 wildlife species including some endangered ones. Due consideration has also been paid to integrating rural and suburban living through safeguarding the interest of the nearby villagers in MLP preparation process. It is a successful example demonstrating how to strike a harmonious balance between both wetland conservation and sustainable project development, as well as showcase compatible co-existence of sub-urban residential development with surrounding villages.

沙埔候花園 - 濕地 · 建家
Sha Po Fairyland –
Cognitive Intelligence of
Conservation in Residential Development



新鴻基地產
Sun Hung Kai Properties

**llewelyn
davies**

ARCHITECTS PLANNERS DESIGNERS
Llewelyn Davies Hong Kong Ltd

ecology
biodiversity
landscape

aec



Planning Category Awardees

Merit – Planning

| Victoria Dockside

New World Development Company Limited

Project Contributors	AB Concept AFSO Designs Arup C. M. Wong & Associates Limited James Corner Field Operations Kohn Pedersen Fox Associates LAAB Architects New World Construction Company Limited New World Development Company Limited One Bite Design Studio Limited PLandscape Co., Limited Ronald Lu & Partners Simplicity Design Studio tonychi Urbis Limited
----------------------	---

Description

In 2019, Mr. Adrian Cheng unveiled Victoria Dockside, a US\$2.6 billion, 3 million-square-foot global art and design district created in collaboration with 100 Creative Powers to reinvigorate Hong Kong's iconic TST waterfront. The project includes K11 MUSEA, K11's sublime culture-retail landmark; K11 ATELIER, the next-generation workplace; K11 ARTUS, a luxury serviced residence; and Rosewood Hong Kong, the ultra-luxury brand's first Hong Kong property. Through Victoria Dockside, Cheng's vision is to build a "Silicon Valley of Culture", injecting culture, art, architecture, design, nature and technology into commerce, forming a unique ecosystem that conserves traditional art and culture while incubating new ideas for tomorrow's generation.



Planning Category Awardees

Merit – Planning

West Kowloon Cultural District (Land and Planning Consultancy Services)

Project Contributors Knight Frank
Llewelyn-Davies Hong Kong Limited

Description

The West Kowloon Cultural District (WKCD) is the largest integrated development project in Hong Kong. Covering a 40-hectares harbour-front site, WKCD will be home to world-class cultural, arts and entertainment facilities. The development of WKCD has been a protracted process lined with complexity since its initiation in 2006. Knight Frank and Llewelyn-Davies Hong Kong are among the select few to be involved with the project from the very beginning, with both parties contributed in transforming WKCD into Asia's premiere arts and cultural quarter.



West Kowloon Cultural District



PRE-CONSTRUCTION

GRAND AWARD

1 One Taikoo Place

MERIT

2 Fitting-out Works for Kwai Tsing District Health Centre

3 MALIBU

4 Malvern College Hong Kong

5 SPX1

6 St Andrew's Church Life Centre

Pre-construction Category Awardees

Grand Award – Pre-construction

| One Taikoo Place

Swire Properties Ltd.

Project Contributors Ove Arup & Partners Hong Kong Ltd
 J. Roger Preston Ltd.
 Rider Levett Bucknall Ltd.
 Swire Properties Ltd.
 Wong & Ouyang [HK] Ltd.

Description

One Taikoo Place is a triple Grade-A office tower in the Taikoo Place redevelopment project. It is linked by an elevated walkways and surrounded by landscaped gardens with cascading water features. The project has been constructed according to the highest standards of building sustainability, and achieved BEAM Plus Provisional Platinum, LEED Precertification Platinum and WELL Precertification Platinum. Seamless collaboration of the project team has contributed to the timely completion of the project. Many innovative initiatives were implemented to maximize energy efficiency and waste reduction. Effective measures have been adopted to minimise the impact to the neighbourhood and ensure site safety.



Pre-construction Category Awardees

Merit – Pre-construction

| Fitting-out Works for Kwai Tsing District Health Centre

Food and Health Bureau

Project Contributors Architectural Services Department
Primary Healthcare Office, Food and Health Bureau
Yau Lee Construction Co., Ltd.

Description

Through the setting up of District Health Centre [DHC], the Government aims to strengthen district-based primary healthcare services, to provide a client-centred environment to better engage the local people for improving their overall well-being.

The project demonstrates the joint efforts of comprehensive project team with professional expertise across disciplines, working alongside collaboration from public, private sectors and the community to put forward a pilot DHC.

The fitting-out design exemplifies a balanced accommodation proposal and distinct space zoning to reflect the key functions of primary health care and incorporates inclusive design considerations to address the needs of all community members.



Communal Pocket Space



Childcare Room and Exhibition Zone



Health Activity Room



Rehabilitation and Wellness Area



Main Lobby



Rehabilitation Area

Pre-construction Category Awardees

Merit – Pre-construction

| MALIBU

Wheelock Properties (Hong Kong) Limited

Project Contributor Arcadis Hong Kong Limited

Description

Malibu is a prime residential property under “O’East” series, developed by Wheelock Properties Limited and MTR Corporation Limited. It is located at the seaside of Lohas. It consists of 3 residential towers (1,600 units) and a 5-storey podium comprises of landscape areas, clubhouse, carpark and a Public Transport Interchange.

Malibu Team targeted to deliver a well-designed, high quality and worth for the price product to our customers. We kept modifying the design details of Malibu to maximize its development potential, functionality, sustainability and ease of maintenance.

Despite facing unique challenges due to site location and constraints, the project was completed with targets on time, cost and quality met.



Pre-construction Category Awardees

Merit – Pre-construction

| Malvern College Hong Kong

Malvern College Hong Kong Limited

Project Contributors Malvern College Hong Kong Limited
P&T Architects and Engineers Limited
P&T [M&E] Limited
Rider Levett Bucknall Limited
Urbis Limited
WSP Hong Kong Limited

Description

Malvern College Hong Kong was awarded a greenfield site located in close proximity to the Hong Kong Science Park, the Chinese University of Hong Kong and the Education University of Hong Kong in Tai Po. The 30,000 square-metre campus houses both primary and secondary school and comprises of academic, sports and performing art spaces which incorporates the latest innovations and technologies in teaching, learning and environmental sustainability. The campus also boasts of its low-carbon footprint which incorporates passive environmental design principles that enhance natural ventilation, light penetration, and shading. The landscaping elements on different levels has been carefully planned & designed to complement the adjacent green environment.



Pre-construction Category Awardees

Merit – Pre-construction

| SPX1

Hong Kong Science and Technology Parks Corporation

Project Contributors Beria Consultants Limited
Hip Hing Joint Venture [SPX1]
Hong Kong Science and Technology Parks Corporation
J. Roger Preston Ltd.
Meinhardt [C&S] Ltd.
Wong Tung & Partners Limited

Description

Science Park Expansion Stage 1 [SPX1] is the flagship project of Hong Kong Science & Technology Parks Corporation. With the support of HKSAR Government in promoting Biomedical Technology and Artificial Intelligence & Robotics, SPX1 comprised of twin towers of R&D offices and laboratories on a podium incorporating latest smart technologies providing innovative design for the two clusters and catering for future needs for quality infrastructure and facilities. In order to achieve this iconic development, SPX1 team utilized versatile innovation and technology ideas and applications such as smart construction and digital inspection systems, to meet user expectations and tight project deadlines.



Pre-construction Category Awardees

Merit – Pre-construction

| St Andrew's Church Life Centre

St. Andrew's Church

Project Contributors	Arcadis Hong Kong Limited Aurecon Hong Kong Limited BSA Consultants Limited Ching Lee Engineering Limited Ken Nicolson Nelson Chen Architects Limited
----------------------	--

Description

St. Andrew's Church Life Centre strongly focuses on conservation strategies in design, energy conservation, balance between potential and non-commercial planning vision (maintaining a low-rise environment for the heritage conservation representing the successful implementation of both development and conservation of a heritage building in Hong Kong.

Without detracting the heritage value, the development providing an 850-seat auditorium with baptismal pool and multi-purpose function rooms fits today needs of various church activities.

The development integrated with the tangible natural and man-made features like church buildings as well as tree-lined streetscape becomes a landmark along the downtown Nathan Road in Kowloon.



CONSTRUCTION

GRAND AWARD

1 Victoria Dockside

MERIT

2 Hong Kong Children's Hospital (HKCH)

3 Kai Tak Cruise Terminal Building

4 Monterey

5 One · Artlane

6 West Kowloon Law Courts Building

Construction Category Awardees

Grand Award – Construction

| Victoria Dockside

New World Development Company Limited

Project Contributors	AB Concept AFSO Designs Arup C. M. Wong & Associates Limited James Corner Field Operations Kohn Pedersen Fox Associates LAAB Architects New World Construction Company Limited New World Development Company Limited One Bite Design Studio Limited PLandscape Co., Limited Ronald Lu & Partners Simplicity Design Studio tonychi Urbis Limited
----------------------	---

Description

In 2019, Mr. Adrian Cheng unveiled Victoria Dockside, a US\$2.6 billion, 3 million-square-foot global art and design district created in collaboration with 100 Creative Powers to reinvigorate Hong Kong’s iconic TST waterfront. The project includes K11 MUSEA, K11’s sublime culture-retail landmark; K11 ATELIER, the next-generation workplace; K11 ARTUS, a luxury serviced residence; and Rosewood Hong Kong, the ultra-luxury brand’s first Hong Kong property. Through Victoria Dockside, Cheng’s vision is to build a “Silicon Valley of Culture”, injecting culture, art, architecture, design, nature and technology into commerce, forming a unique ecosystem that conserves traditional art and culture while incubating new ideas for tomorrow’s generation.



Construction Category Awardees

Merit – Construction

| Hong Kong Children’s Hospital (HKCH)

Hong Kong Hospital Authority

Project Contributors Architectural Services Department, HKSAR Government
China State – Shui On Joint Venture
Simon Kwan & Associates Limited
Meinhardt (C&S) Limited
J. Roger Preston Limited
Rider Levett Bucknall Limited
ACLA Limited
Marc & Chatel Design Limited

Description

The overarching design vision of HKCH is to create a home-like and child-friendly environment to cater for the needs of young patients and families.

The central rehab garden provides seamless connectivity between the public road and the waterfront promenade. Visual permeability is optimized through the ‘podium-free’ design. All ward cubicles take advantage of natural lighting and views. Internal courtyards further maximize daylight penetration and connection to outdoor environment.

The concept “A Habitat for Life” is applied where each patient floor is featured with vivid graphics on an animal character in its habitat which provides an inspirational ambience with story-telling opportunities.



Construction Category Awardees

Merit – Construction

| Kai Tak Cruise Terminal Building

Tourism Commission, HKSAR Government

Project Contributors Architectural Services Department, HKSAR Government
Dragages Hong Kong Limited
Foster + Partners and Wong Tung & Partners Limited
AECOM Asia Co. Limited
Arcadis

Description

The Kai Tak Cruise Terminal Building is iconic and highly efficient to facilitate the operator to provide world-class cruise services. It can accommodate two world's largest cruise vessels berthed at the same time and aim to become an attraction for locals and tourists while consolidates Hong Kong's position as a premier cruise hub in the region.

The design comprises a series of connecting green landscaped decks from the first level up. The wide span column-free layout allows for flexible use of space. Thus, the operation area can be converted into other uses during non-peak season, ensuring its long-term economic sustainability.



Construction Category Awardees

Merit – Construction

| Monterey

Wheelock Properties (Hong Kong) Limited

Project Contributors AECOM
Arcadis HK Ltd
Gammon Construction Ltd.
Harriman Property Management Limited
Meinhardt (M&E) Ltd.
Ramboll HK Ltd.
WCWP International Ltd.
Wheelock Properties (Hong Kong) Limited

Description

Monterey, a seaside luxurious property with retail opportunity developed by Wheelock Properties (WPL), represents WPL's commitment to quality living through holistic design. Located at Tsueng Kwan O South, it is the "grand finale" of WPL's "O'South" portfolio playing a key role in establishing a future-proof hub of residential, retail and lifestyle activity.

This is not only achieved through building design but connectivity with other WPL properties and public & private investment. Mix use of construction technology, WPL handover app and smart property management systems have set an industry-leading example to improve residence experience.

Monterey is certified as BEAM Plus Gold.



Construction Category Awardees

Merit – Construction

| One · Artlane

Henderson Development Limited, Peterson Group

Project Contributors Project Management [2] Department,
Henderson Development Agency Limited
Grandic Construction Co. Ltd.
WT Partnership

Description

With environmental, cultural, and community considerations at the core of its design, One Artlane aimed towards rejuvenating and nurturing a formerly run-down district in Sai Ying Pun and sought to provide a holistic urban fabric design for the community. Inspired by the popular urban art murals in New York, London and Seoul, Henderson Land invited famous artists to create murals under the theme of “Art & Music of SOHO” to beautify, revitalize and transform the old district to the largest art mural village in Hong Kong. To acknowledge its unprecedented contributions to the community, One Artlane is recognized by the Hong Kong Tourism Board as one of the four major new tourist attractions in 2019 and the Grand Awardee of Quality Building Award 2020 [Single Residential Category].



Construction Category Awardees

Merit – Construction

| West Kowloon Law Courts Building

The Judiciary of the Hong Kong Special Administrative Region

Project Contributors Architectural Services Department
Wong & Ouyang [HK] Ltd.
Ove Arup & Partners HK Ltd.
J. Roger Preston Ltd.
Kenneth Ng & Associates Ltd
Rider Levett Bucknall Limited
Shui On Construction Company Limited

Description

The West Kowloon Law Courts Building is located at the West Kowloon Reclamation Area. The design of the Building exhibits the independent and dignified image of the court and symbolizes an independent, open and transparent judicial system of Hong Kong.

The Building comprises 32 courtrooms for West Kowloon Magistrates' Courts, Small Claims Tribunal, Coroner's Court, Obscene Articles Tribunal, and the associated facilities such as library, file repository and offices etc. to meet the service requirements of different court users and enhance operational efficiency of the courts.



SALES & LEASING

GRAND AWARD

1 618 Shanghai Street

2 One · Artlane

MERIT

3 OASIS KAI TAK

Sales & Leasing Category Awardees

Grand Award – Sales & Leasing

| 618 Shanghai Street

Urban Renewal Authority

Description

Bringing new life into centennial shophouses, 618 Shanghai Street [618] of the Urban Renewal Authority (URA), a conservation-cum-revitalisation project, showcases a successful leasing model with living heritage, social values and business efficacy. With the URA team's passion and professionalism, technology and innovations, sound marketing concept, effective leasing strategies and marketing management, the enlivened Cantonese verandah cluster has surmounted unprecedented challenges after challenges, allowing the community and different generations to have their footprints and stories told. Through development and conservation, the legacy of 618 continues with and for the community, now and in the years to come.



Sales & Leasing Category Awardees

Grand Award – Sales & Leasing

| One · Artlane

Henderson Development Limited, Peterson Group

Project Contributors	Project Management [2] Department, Henderson Development Agency Limited Sales [2] Department, Henderson Development Agency Limited Portfolio Leasing Department, Henderson Development Agency Limited
----------------------	--

Description

With environmental, cultural, and community considerations at the core of its design, One Artlane aimed towards rejuvenating and nurturing a formerly run-down district in Sai Ying Pun and sought to provide a holistic urban fabric design for the community. Inspired by the popular urban art murals in New York, London and Seoul, Henderson Land invited famous artists to create murals under the theme of “Art & Music of SOHO” to beautify, revitalize and transform the old district to the largest art mural village in Hong Kong. To acknowledge its unprecedented contributions to the community, One Artlane is recognized by the Hong Kong Tourism Board as one of the four major new tourist attractions in 2019 and the Grand Awardee of Quality Building Award 2020 [Single Residential Category].



Sales & Leasing Category Awardees

Merit – Sales & Leasing

| OASIS KAI TAK

Wheelock Properties (Hong Kong) Limited

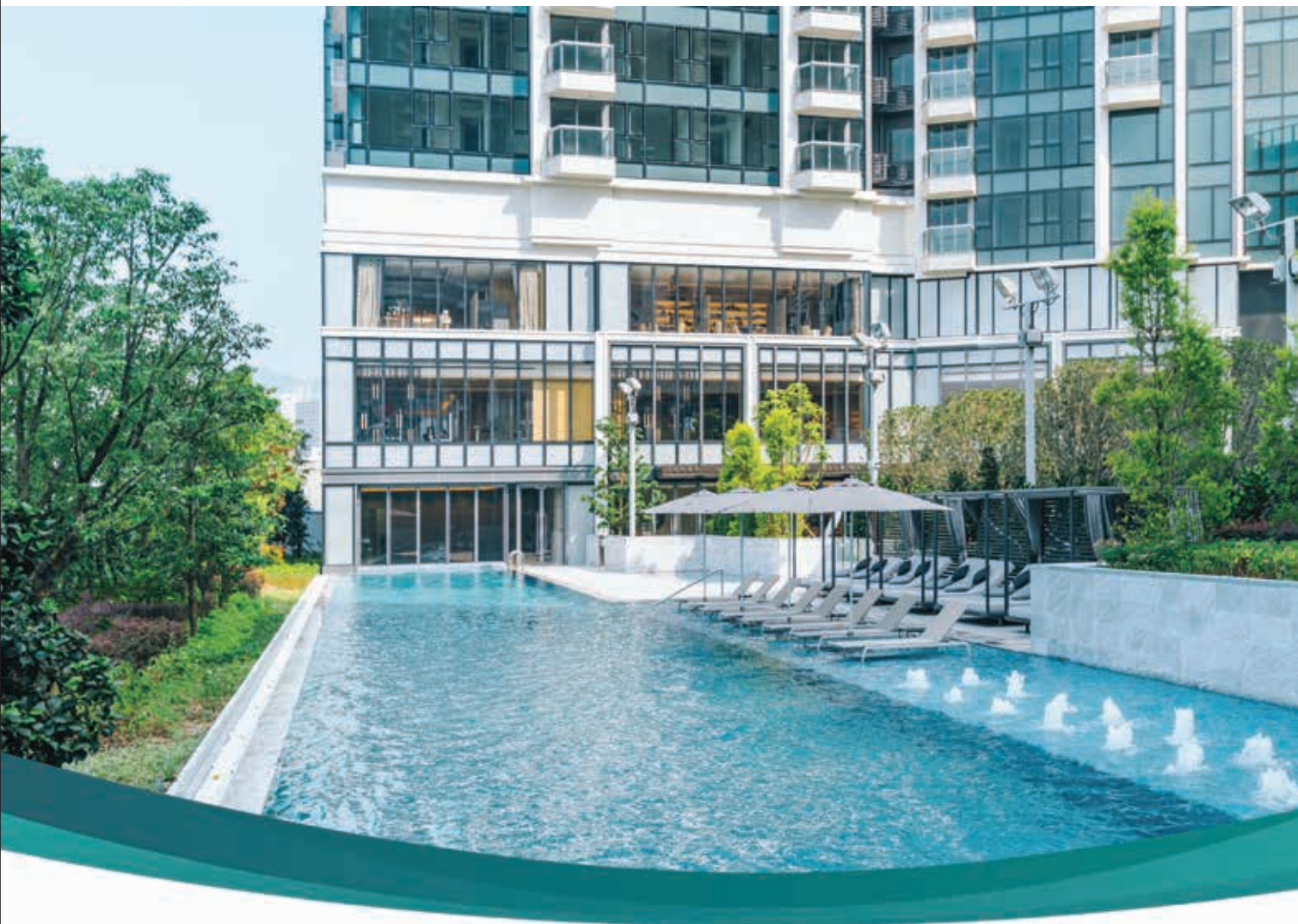
Description

OASIS KAI TAK is the first residential project of Wheelock in Kai Tak, an evolving integrated hub with residential, commercial, recreational situated at the prime location of Kowloon East. Embraced the environmental and communal aspirations, Wheelock envisioned the project as an Oasis in Kai Tak to maximize greenery and create sustainable living and holistic wellness with various features, offering the genuine riverside living with soothing green environment.

Looked beyond traditional real estate metrics, Wheelock developed innovative sales and marketing strategies to identify and target potential buyers with outstanding achievement in sales performance and promoting public awareness of sustainable living.

OASIS

K A I T A K



The Spirit of Living

WHEELOCK
PROPERTIES
會德豐地產



POST-OCCUPATION

GRAND AWARD

- 1 618 Shanghai Street

MERIT

- 2 One Bay East
- 3 Renovation of 1/F, Main Block, APB Centre, Architectural Services Department
- 4 Sha Po Fairyland – the First Managed Wetland in Residential Estate

Post-Occupation Category Awardees

Grand Award – Post-occupation

| 618 Shanghai Street

Urban Renewal Authority

Project Contributors Urban Renewal Authority
Chau Lam Architects and Associates Architects & Engineers
[H.K.] Limited

Description

618 Shanghai Street comprises 10 pre-war shophouses assessed as Grade II historical buildings and 4 post-war buildings. The project has preserved historical ambiance of the old buildings, including the entire facade, and brought new elements to the buildings to revitalize it into an attractive community space for enjoyment of public. The project team has developed an innovative BIM-FM system to enhance smart and innovative facility management during post-occupation stage. We believe that it could be a showcase to give new life to historical buildings by integration of old and new elements, and continue its role and function in the community.



Post-Occupation Category Awardees

Merit – Post-occupation

| One Bay East

Wheelock Properties (Hong Kong) Limited

Project Contributor Harriman Property Management Limited

Description

One Bay East is a grade-A commercial building developed by Wheelock Properties (Hong Kong) Limited in Kowloon East. It has been awarded a double gold in international standard LEED® and BEAM Plus since 2016.

Apart from the green elements installed by the Developer at One Bay East, Harriman Property Management Limited was a pioneer in HK in adopting 3M™ Clean-Trace™ Hygiene Monitoring for clients. These key factors make one Bay East becomes an Energy Saving Building that achieved environmental sustainability.

For conservation, the landscape professionals take great care in maintaining and nurturing Ficus religiosa [菩提樹], which is retained up to now from prior site development, by performing thorough inspection regularly. Most importantly, Ficus religiosa is not only a part of conservation for these twin towers but also becomes a landmark and symbol of One Bay East.



菩提樹 *Ficus religiosa* is a part of conservation as well as a landmark of One Bay East Twin Tower. Greening and Ecology Reducing Urban Heat Island (UHI) effect over 40% of site areas in landscaping and greenery features.

Post-Occupation Category Awardees

Merit – Post-occupation

Renovation of 1/F, Main Block, APB Centre, Architectural Services Department

Architectural Services Department

Project Contributors Able Engineering Company Limited
Llewelyn-Davies Hong Kong Limited
Ove Arup & Partners Hong Kong Ltd.
VIRCON
Wong & Ouyang [Building Services] Ltd.

Description

The office accommodation of the Architectural Services Department, located at 1/F of Main Block, APB Centre, Hung Hom, is the first government office in Hong Kong to achieve Platinum Award under BEAM Plus Interiors Accreditation. The renovation project adopted a holistic approach on sustainable design, green construction, environmental-friendly operation and maintenance to transform the existing premises to a green workplace.

The project was successfully completed and highly appreciated by end users who found the new working environment healthier, more comfortable and enhanced their efficiency at work.



Post-Occupation Category Awardees

Merit – Post-occupation

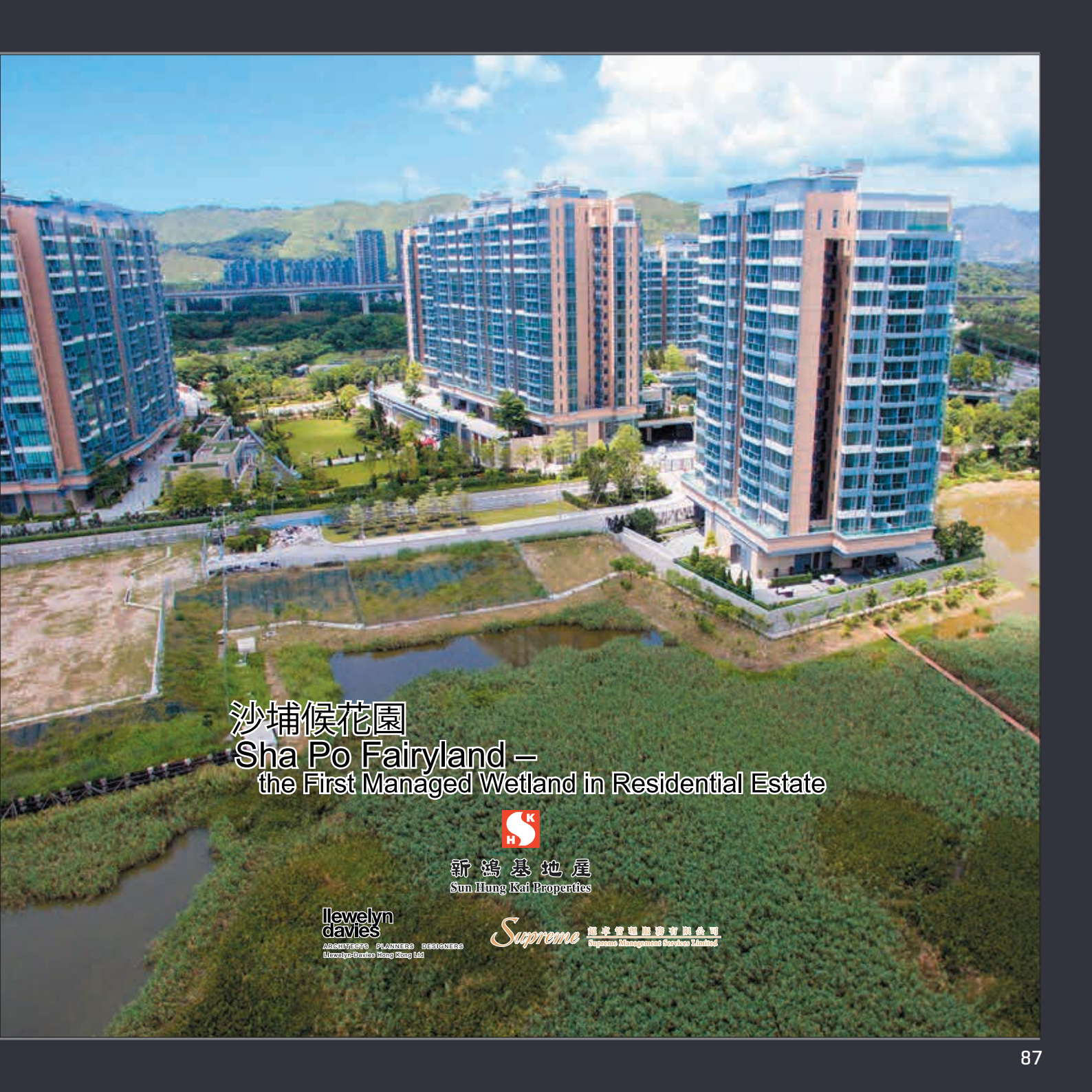
Sha Po Fairyland – the First Managed Wetland in Residential Estate

Sun Hung Kai Real Estate Agency Limited

Project Contributors Llewelyn-Davies Hong Kong Limited
Supreme Management Services Limited

Description

Park Yoho, with about 3,100 flats, is a first-of-its-kind wetland conservation cum residential development. While residents have a stake both in terms of rights and obligations in the 7-hectare restored wetland, the wetland in return provides the residents with high quality living environment with natural landscape amenities, unique green lifestyle and permanent open view which contribute to enhancing its asset value. It showcases that wetlands do not necessarily have to be idle or untouchable sites. With effective long-term management and maintenance, wetlands could be a “fairyland” for both the residents and wildlife.



沙埔候花園
Sha Po Fairyland –
the First Managed Wetland in Residential Estate



新鴻基地產
Sun Hung Kai Properties

**Jlewelyn
davies**

ARCHITECTS PLANNERS DESIGNERS
Jlewelyn-Davies Hong Kong Ltd

Supreme

匯卓管理服務有限公司
Supreme Management Services Limited



SPONSOR ADVERTISEMENTS



With the Compliments of



恒基兆業地產集團
HENDERSON LAND GROUP

Park Yoho's Sha Po Fairyland – The First Managed Wetland in Residential Estate

Located in Kam Tin North, **Park Yoho is the largest and first-of-its-kind wetland conservation cum residential development project in Hong Kong.** The project provides about 3,100 numbers of residential flats and, at the same time, restored about **7ha of wetland habitat**, which is now known as the 'Sha Po Fairyland'.

The project proponent has strived to ensure the project be **self-sustainable** with minimal cost incurred. Innovation and technology (e.g. mobile application, digitalizing and automation tools etc.) and energy efficient measures (e.g. rely natural tidal variation of water level to sustain the long-term health of reeds, reuse silt as natural fertilizer etc.) have been widely applied in all aspects of its daily management of the restored wetland so as to ensure the **highest standard of property management and wetland maintenance** being provided.

With **committed long-term management and maintenance**, Sha Po Fairyland has become an ideal place for leisure for Park Yoho's residents, providing high quality living environment and unique green and healthy lifestyle for residents and, at the same time, a heaven for over 330 wildlife species, including some 'near-threatened' species.

Having **exceptional conservation and educational value**, guided tours and activities tailor-made for residents and visitors of different age groups are regularly organized to heighten awareness on wetland conservation and to encourage all generations to embark on a healthy and eco-conscious lifestyle, **making conservation as part of the residents' daily lives.**



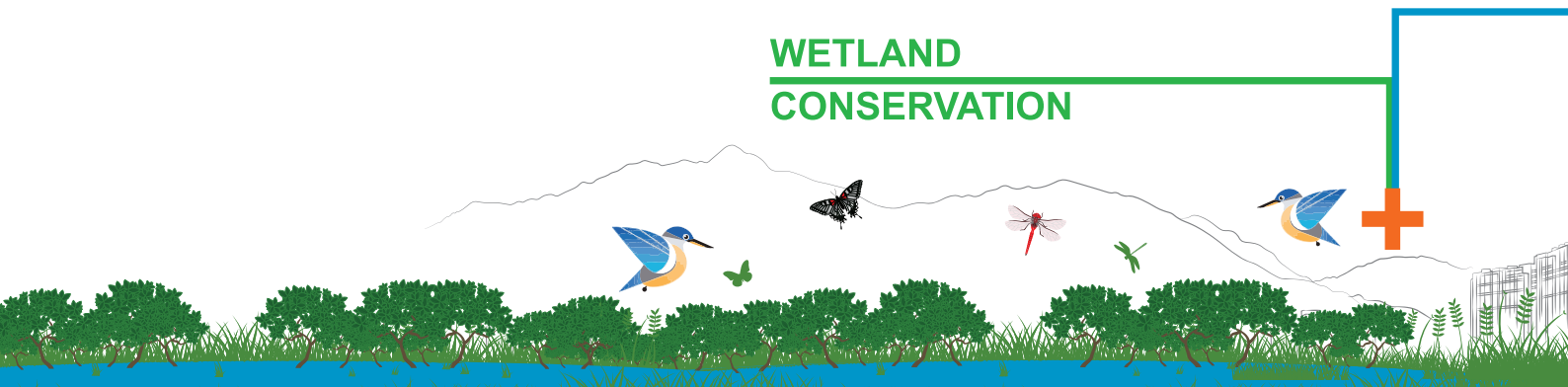
新鴻基地產
Sun Hung Kai Properties

llewelyn
d Davies
ARCHITECTS PLANNERS DESIGNERS
Llewelyn-Davies Hong Kong Ltd

Supreme 超卓管理服務有限公司
Supreme Management Services Limited



WETLAND CONSERVATION

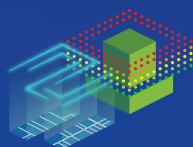


Creating Better Lifescapes



St. George's Mansions

(Rendering)



市建廿載
智建未來
URBAN
REINVENTION
ADVANCE
beyond 20

創新思維 智建未來 REGENERATING THE CITY WITH VISION AND INNOVATION



The Spirit of Living

Crafting an exceptional living experience with quality building, design and thoughtful service through Homey, Wellness, Sense of Belonging and Trust.



- Malibu
- Monterey
- Oasis Kai Tak
- One Harbourgate
- One Bay East

The Spirit of Living

WHEELOCK
PROPERTIES
會德豐地產

Preserving an iconic past



writing a new future

In conserving the State Theatre, New World is shining a light on forgotten stories and heritage, and writing a new chapter in the context of Creating Shared Value. We hope this Grade I Historic Building will continue to serve our society and our next generation as a true cultural oasis.

we create
we are artisans
we are csv.



Your *partners* in property for 125 years.



Knight Frank is the leading independent global property consultancy. Headquartered in London, Knight Frank has more than 16,000 people operating from 384 offices across 51 territories. The Group advises clients ranging from individual owners and buyers to major developers, investors and corporate tenants. Knight Frank has a strong presence in the Greater China property markets, with offices in Hong Kong, Beijing, Shanghai, Shenzhen, Guangzhou, Taipei and Macau, offering high-quality professional advice and solutions across a comprehensive portfolio of property services.

knightfrank.com.hk

Knight Frank Petty Limited EAA Lic No C-010431





Airside, Kai Tak

WEAVE
YOUR DREAMS
WITH US



Professional Value-Added
Commercial Real Estate Consultancy Services
提供專業附加價值的商業房地產顧問服務

ATWL 榮德顧問國際有限公司
ATWL International Consultancy Limited

香港中環皇后大道中183號中環大廈12樓1202室
Unit 1202, 12/F COSCO Tower,
183 Queen's Road Central, Hong Kong
Tel: (852) 2831 0028 Fax: (852) 2831 0399
Email: admin@atwl.net

協盛建築集團
Hip Seng Group of Companies



we create
we are artisans
we are csv.

The Artisanal Movement

Global Knowledge Local Expertise World Class Advice

You benefit from us

www.savills.com.hk

savills
第一太平戴維斯



CONSTRUCTION
INDUSTRY COUNCIL
建造業議會

 THE HONG KONG INSTITUTE OF
SURVEYORS
香港測量師學會



BEST
DEVELOPMENT &
CONSERVATION
AWARD 2021

Acknowledgments

Diamond Sponsors:



Platinum Sponsor:



Gold Sponsors:



Silver Sponsors:



Special Acknowledgement:



Supporting Organisations:



Jury Panel

Convenor

Sr Prof Bay WONG
Past President of The Hong Kong Institute of Surveyors
Chairman, Project Management Committee of The Hong Kong Institute of Surveyors

Members

Sr Hak CHAN, BBS
Past President of The Hong Kong Institute of Surveyors
Former Deputy Director of Lands [Survey & Mapping] of
Lands Department, HKSARG
Founding Board Member of the Smart City Consortium

Sr Prof K W CHAU
Past President of The Hong Kong Institute of Surveyors
Chair Professor, Department of Real Estate and Construction,
The University of Hong Kong

Mrs Sylvia LAM
Former Director of Architectural Services
Architectural Services Department, HKSARG

Mr Raymond LEE
Former Director of Planning,
Planning Department, HKSARG

Mr Douglas SO Cheung Tak, BBS, JP
Chairman of the Antiquities Advisory Board

Mr YU Tak-cheung, JP
Director of Buildings,
Buildings Department, HKSARG

Organising Committee

CHAIRMAN

Sr Alexander LAM

VICE-CHAIRMAN

Sr Prof Bay WONG

MEMBERS

Sr Gigi MOK	Building Surveying Division
Sr Jeffrey KWOK	Building Surveying Division
Sr Dr Lennon CHOY	General Practice Division
Sr Winnie KOO	General Practice Division
Sr Eric TANG	Land Surveying Division
Sr Dr Lesly LAM	Land Surveying Division
Sr Edmond YEW	Planning and Development Division
Sr Danny LEUNG	Property and Facility Management Division
Sr Jonathan LEE	Property and Facility Management Division
Sr Poleon CHAN	Quantity Surveying Division
Sr Sunny WONG	Quantity Surveying Division
Sr Leonie CHAN	Young Surveyors Group
Sr Candy HO	Young Surveyors Group



The Hong Kong Institute of Surveyors
香港測量師學會

Head Office 總辦事處

Room 1205, 12/F, Wing On Centre, 111 Connaught Road Central,
Sheung Wan, Hong Kong

香港上環干諾道中111號永安中心12樓1205室

Tel 電話: [852] 2526 3679 Fax 傳真: [852] 2868 4612 Email 電郵地址: info@hkis.org.hk

Beijing Office 北京辦事處

Room 616, 6/F, Zhongkun Plaza, No. 59 Gaoliangqiaoxiejie,
No.1 Yard, Haidian District, Beijing, China, 100044


中國北京市海澱區高樑橋斜街59號院1號樓中坤大廈6層616室 [郵編: 100044]

Tel 電話: 86 [10] 8219 1069 Fax 傳真: 86 [10] 8219 1050 Email 電郵地址: info-bjo@hkis.org.hk

Website 網址: www.hkis.org.hk

 Facebook : [hkisoofficial](https://www.facebook.com/hkisoofficial)

 微信名稱: 香港測量師學會 Wechat : [HKIS-Official](https://www.wechat.com/p/hkis-official)

 Instagram : [hkis.surveyors](https://www.instagram.com/hkis.surveyors)